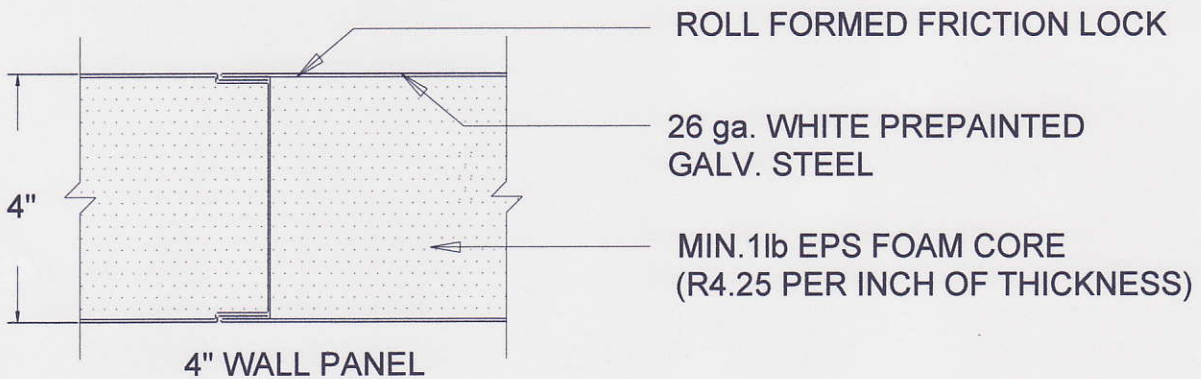


MANUFACTURED ACCORDING TO ASTM E-72 STANDARDS
 Lamination W/ Voracor Adhesives (Dow Chemical)
 Part A - CE130 ISO
 Part B - Cs1075 Polyol



PANEL DESCRIPTION
 4" & 6" PANEL

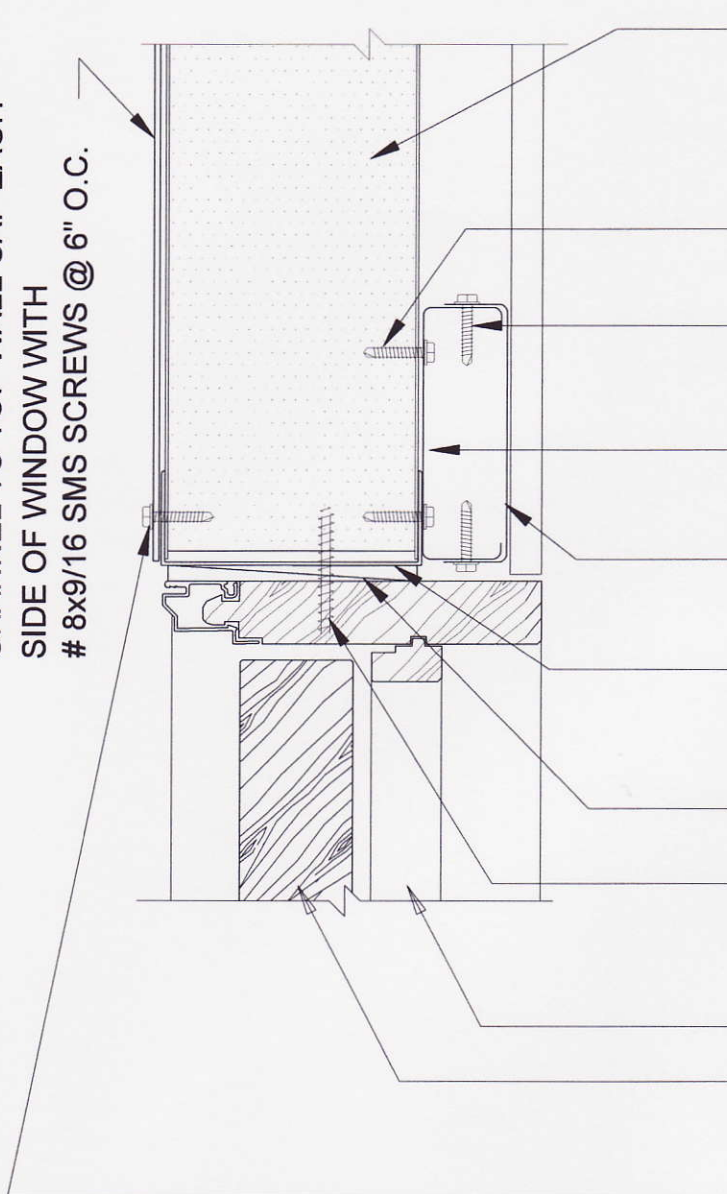
www.SipDepot.com
 PO Box 2074, Tarpon Springs, FL.
 (727) 937-3090 fax (727) 937-1849

Shadowline
 Steel Panels

DRWG.#

A3

NOTE: 2"x18ga STRAP FROM BASE
CHANNEL TO TOP WALL CAP EACH
SIDE OF WINDOW WITH
8x9/16 SMS SCREWS @ 6" O.C.



4"x26 ga. WHITE PREPAINTED
GALV. STEEL SIPS PANEL
MIN. 1lb EPS FOAM CORE
(R4.25 PER INCH OF THICKNESS)

(2) #10 x 3/4" S.M.S
@ 12" O.C.

#10 x 3/4" S.M.S
@ 12" O.C. EACH SIDE

3-5/8" x 20ga. GALV.
STL. STUD

3-5/8" x 20ga. GALV.
STL. TRACK

CONT. 4" x 18ga GALV. STEEL
RECEIVING CHANNEL
EXTRUS. OR EQUAL

SHIM SPACE

#10 x 2" S.M.S.
@ 12" O.C.

JAMB/THRES. BEYOND
PREHUNG DOOR UNIT
FASTEN PER MANUF.
SPECS.

#10 x 3/4" S.M.S
@ 6" O.C. EACH SIDE

DOOR HEAD / JAM @
PANEL WALL

www.SipDepot.com

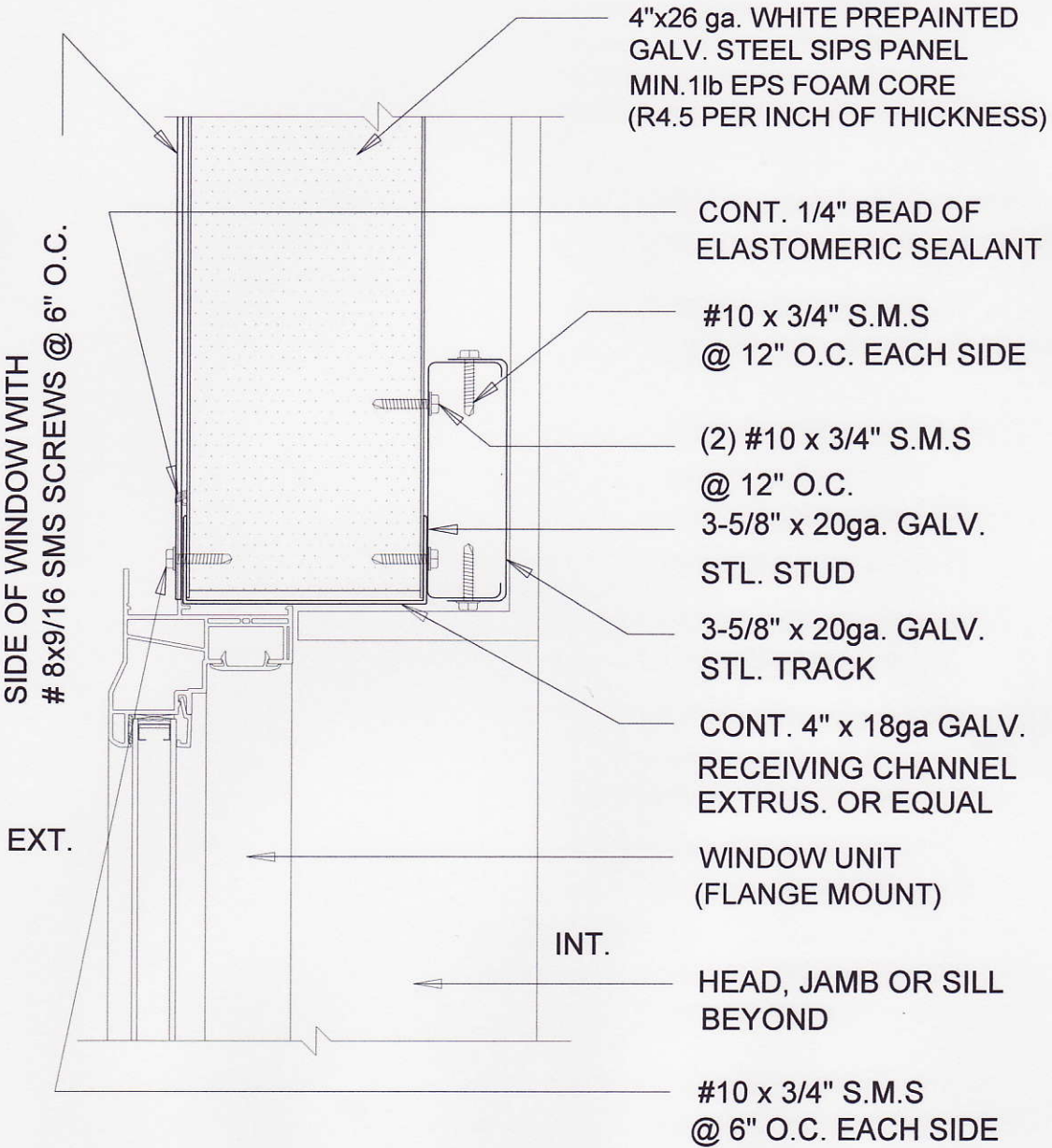
PO Box 2074, Tarpon Springs, FL.
(727) 937-3090 Fax (727) 937-1849

Shadowline
Steel Panels

DRWG.#

B4

NOTE: 2"x18ga STRAP FROM BASE
CHANNEL TO TOP WALL CAP EACH
SIDE OF WINDOW WITH
8x9/16 SMS SCREWS @ 6" O.C.



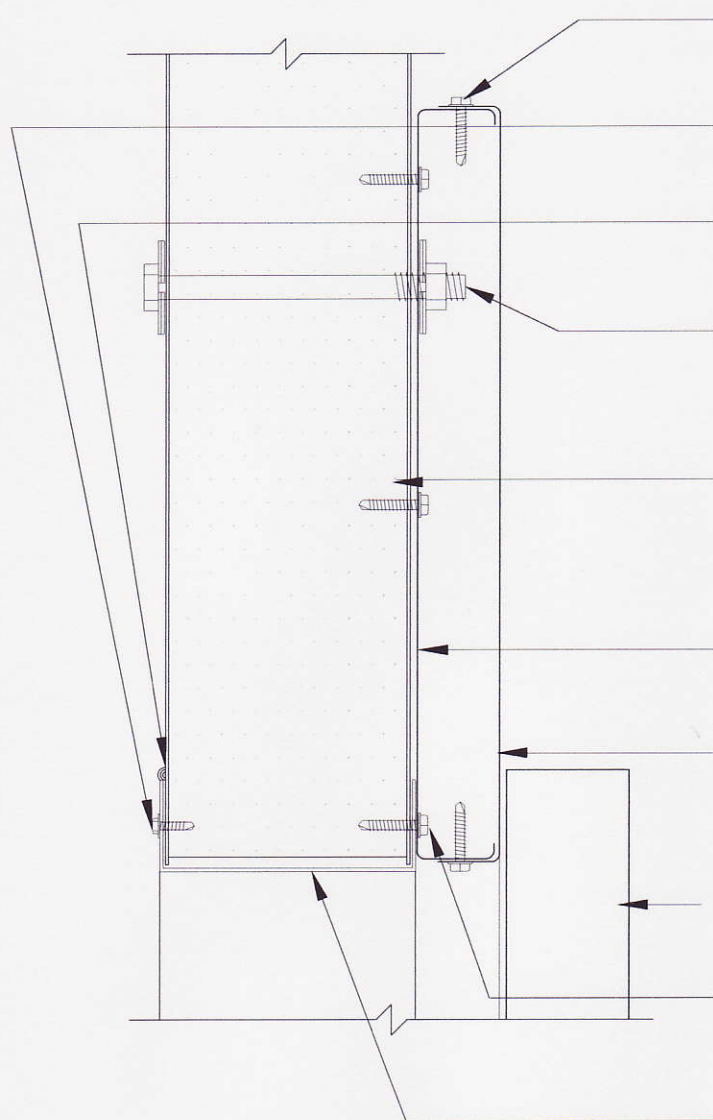
WINDOW HEAD / JAM &
SILL @ PANEL WALL

www.SipDepot.com
PO Box 2074, Tarpon Springs, FL.
(727) 937-3090 fax (727) 937-1849

Shadowline
Steel Panels

DRWG.#

B5



#10 x 3/4" S.M.S
@ 12" O.C. EACH SIDE

#10 x 3/4" S.M.S
@ 6" O.C. EACH SIDE

CONT. 1/4" BEAD OF
ELASTOMERIC SEALANT

3/8" X 5" BOLT
W/ 1 1/2" WASHER
EACH SIDE @ 24" O.C.

4"x26 ga. WHITE PREPAINTED
GALV. STEEL SIPS PANEL
MIN. 1lb EPS FOAM CORE
(R4.25 PER INCH OF THICKNESS)

12" x 16ga. GALV. STL.
STUD OR EQUAL

12" x 16ga. GALV. STL.
TRACK

DOOR UNIT

(3) #10 x 3/4" S.M.S
@ 12" O.C.

4" x 18ga GALV. STEEL
RECEIVING CHANNEL
EXTRUS. OR EQUAL

GARAGE DOOR HEADER
OR LARGE OPENING HEADER
@ PANEL WALL

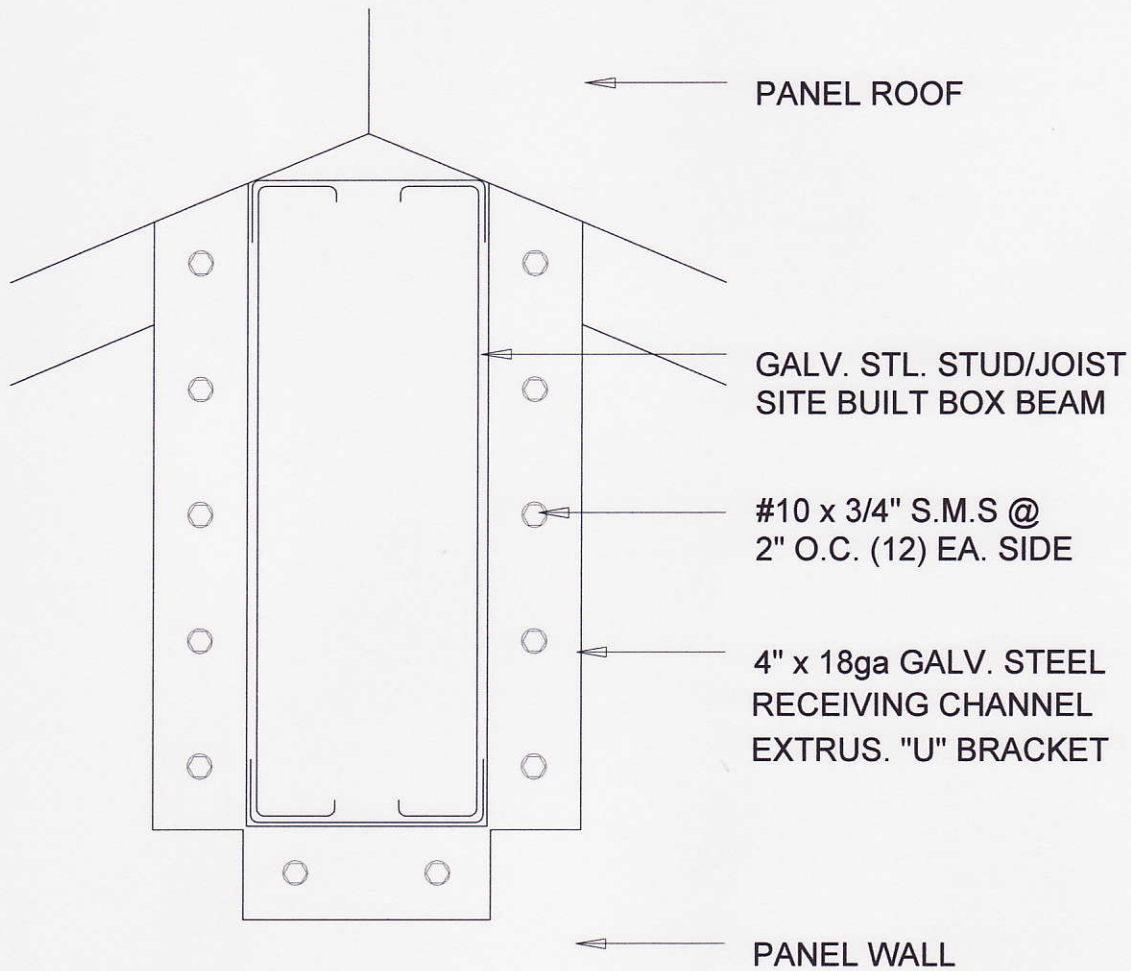
www.SipDepot.com

PO Box 2074, Tarpon Springs, FL.
(727) 937-3090 fax (727) 937-1849

Shadowline
Steel Panels

DRAWING #

B6



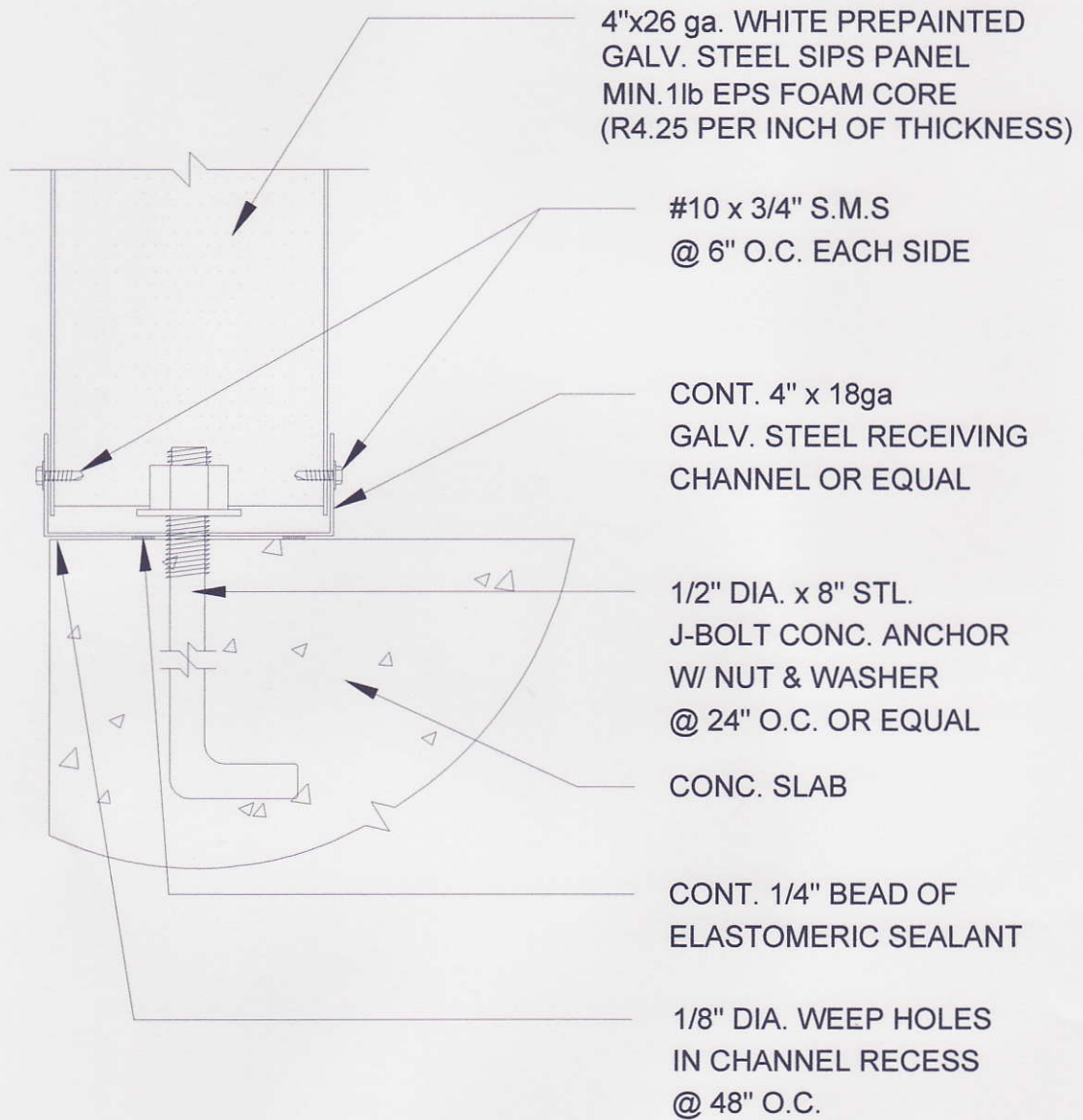
BEAM POCKET IN
PANEL WALL

www.SipDepot.com
 PO Box 2074, Tarpon Springs, FL.
 (727) 937-3090 fax (727) 937-1849

Shadowline
 Steel Panels

DRWG.#

B7



RECEIVING CHANNEL
PANEL WALL TO SLAB

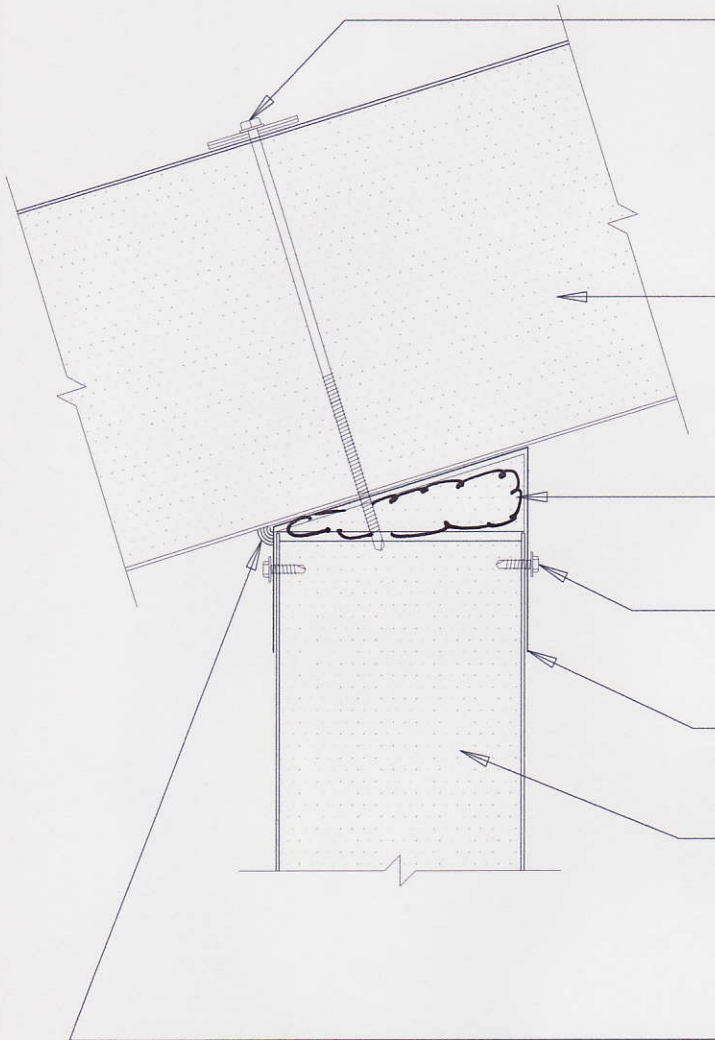
www.SipDepot.com

PO Box 2074, Tarpon Springs, FL.
(727) 937-3090 fax (727) 937-1849

Shadowline
Steel Panels

DRWG.#

A5



#10 x 7-1/2" S.M.S. W/
1/4" I.D. x 1 1/2" O.D.
ALUM NEO. WASHER
@ 8" O.C. OR EQUAL

6"x26 ga. WHITE PREPAINTED
GALV. STEEL SIPS PANEL
MIN. 1lb EPS FOAM CORE
(R4.25 PER INCH OF THICKNESS)

FOAM ~~WEDGE~~ FILL

#10 x 3/4" S.M.S.
@ 6" O.C. EACH SIDE

18ga. GALV. STEEL BREAK
METAL PITCHED WALL CAP

4"x26 ga. WHITE PREPAINTED
GALV. STEEL SIPS PANEL
MIN. 1lb EPS FOAM CORE
(R4.25 PER INCH OF THICKNESS)

CONT. 1/4" BEAD OF
ELASTOMERIC SEALANT

PANEL WALL TO
PANEL ROOF

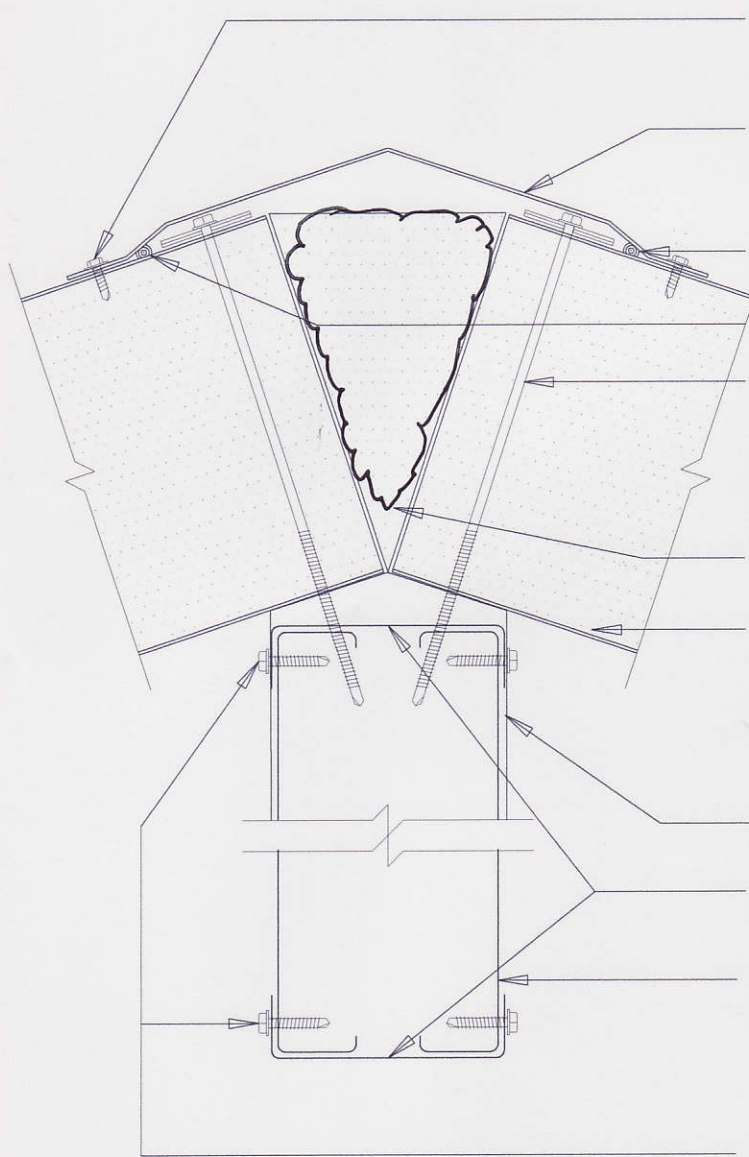
www.SipDepot.com

PO Box 2074, Tarpon Springs, FL.
(727) 937-3090 fax (727) 937-1849

Shadowline
Steel Panels

DRWG.#

A8



#10 x 3/4" S.M.S
@ 12" O.C. EACH SIDE

BREAK METAL RIDGE
CAP

CONT. 1/4" BEAD OF
ELASTOMERIC SEALANT

#10 x 8" S.M.S. W/
1/4" I.D. x 1 1/2" O.D.
ALUM. NEO. WASHER
@ 8" O.C.

FOAM ~~WEDGE~~ FILL

26 ga. WHITE PREPAINTED
GALV. STEEL SIPs PANEL
MIN. 1lb EPS FOAM CORE
(R4.25 PER INCH OF THICKNESS)

18ga. GALV. STEEL RIDGE BEAM CAP

CONT. 3 5/8" x 18ga.
GALV. MTL. RUN. TRACK

GALV. STL. JOIST/STUD
SITE BUILT BOX BEAM

#10 x 3/4" S.M.S
@ 12" O.C. EACH SIDE

PANEL ROOF TO LIGHT
GAUGE STL. RIDGE BEAM

www.SipDepot.com

PO Box 2074, Tarpon Springs, FL.
(727) 937-3090 fax (727) 937-1849

Shadowline
Steel Panels

DRWG.#

B1

ROOF FINISH & GUTTER
BY OTHERS.

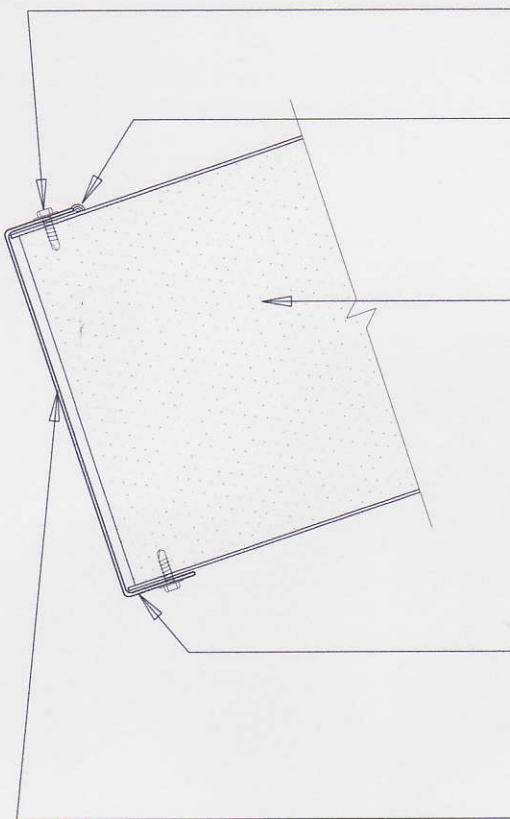
#8 x 9/16" S.M.S
@ 8" O.C. EACH SIDE

CONT. 1/4" BEAD OF
ELASTOMERIC SEALANT

6"x26 ga. WHITE PREPAINTED
GALV. STEEL SIPs PANEL
MIN. 1lb EPS FOAM CORE
(R4.25 PER INCH OF THICKNESS)

1/8" DIA. WEEP HOLES
IN BASE OF FASCIA
TRIM @ 48" O.C.

CONT. 6" x .26ga WHITE
PREPAINTED GALV. STEEL
C-CHANNEL FASCIA OR EQUAL.



PANEL ROOF FASCIA

PANEL ROOF
FASCIA

www.SipDepot.com
PO Box 2074, Tarpon Springs, FL.
(727) 937-3090 fax (727) 937-1849

Shadowline
Steel Panels

DRWG.#

A4